

User Guide

1 Welcome

Thank you for purchasing the Micromax X396. Your X396 is packaged with the following state of the art features:

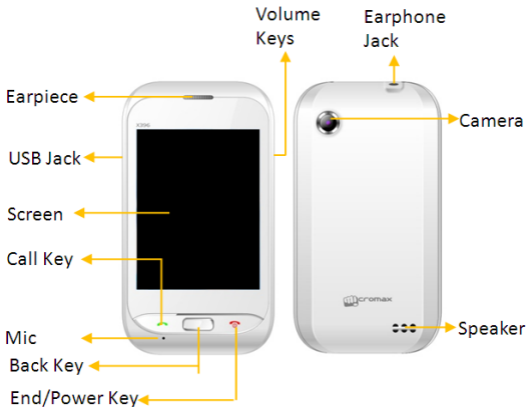
- Dual SIM
- VGA Camera
- 3.2" touch screen
- Music Player/FM Radio
- WAP/Bluetooth
- Sound Recording
- Expandable Memory (up to 16 GB)

Important:

Please read the contents of this manual to fully utilize the features of this phone.

User Guide

2 Phone Layout

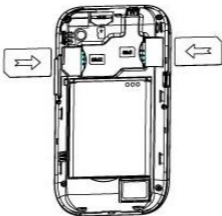


User Guide

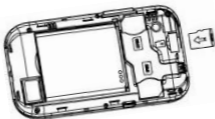
2.1 Insert SIM Card/Memory card

The X396 is a Dual SIM mobile phone allowing you to use two SIM Cards.

- Switch off the mobile phone and remove the rear cover and battery.
- Insert the SIM card(s) correctly in the SIM slot(s) as shown below.



- Insert the memory card into the memory card slot as shown below.



- Finally, insert the battery and the rear cover of the mobile

User Guide






phone.

Note: - Use only compatible memory cards approved by Micromax. Incompatible cards may damage the slot or corrupt the data stored in the card.



3 Getting Started

3.1 Using the Phone's Buttons

The phone's buttons offer a lot of functions and shortcuts.

Button	Press
	Locks the screen/ Long press to switch on/off the phone/
	Goes back to previous screen.
	Call a number from dialpad, call log or contacts/ Answer a call.
	Opens the dialpad.
	Opens the messaging inbox.

User Guide

 A square icon with rounded corners, featuring a dark background with several vertical yellow bars of varying heights, resembling a music equalizer. A green play button is centered at the bottom.	Opens the music player.
 A square icon with rounded corners, showing a brown leather-bound book with a yellow tab sticking out from the top.	Opens Contact List

3.2 Using the Touch screen

You can use the touch screen in the following ways:

Touch: Acts on items on the screen, such as application and settings icons, to type letters and symbols using the onscreen keyboard, or to press onscreen buttons.

Touch and hold: Touch and hold an item on the screen until an action occurs.

Swipe or slide: Quickly slide your finger across the surface of the screen, (without dragging an item). For example, slide the screen up or down to scroll a list.

3.3 Smart UI

Settings>Theme Settings> Theme

Lets you switch between two customized themes and further lets you choose various effects to enhance the look and feel of your home screen.

To choose various effects;

Go to Switch effects/Home effect in the launcher or home screen

User Guide

4 Basic Operations

4.1 Switch Phone ON/OFF

To switch ON your phone, press and hold the **End key** for a few seconds.

To turn OFF your phone, press and hold down the **End key** for a few seconds.

4.2 Lock/Unlock the phone


For phone lock:

1. On the main menu, touch Settings > Security Settings> Phone and SIM> Phone Lock
2. You can set the password to lock your phone.

For Screen Lock:

Go to **Settings> Theme settings>Screen lock** and choose the unlocking method from either **Cosmos** or **Pattern**.


4.3 Make a call

- Tap the  icon on main menu or the home screen to open the dialpad to dial the desired number...
- You can also tap on Dialpad, Call log or Contacts tab to choose a number to call.
- To dial an international number, touch and hold the 0 key to enter the Plus (+) symbol, and then enter the international

User Guide

country prefix, followed by the phone number



- Touch the  icon to dial the number.
- Press the **Volume Up/ Down** key on the right side to adjust the call volume.

4.4 Conference Call

If you dial or accept a new call when you are already on a call, you can or merge the calls into a conference call.

- 1. Place a call to the first participant.
- 2. When you are connected, touch the Add New call icon, the first participant is put on hold and you are prompted to dial the second contact.
- 3. Place the next call, using the phone tab, the Call log, or your contacts.
- 4. When you are connected, touch **Merge calls**. The participant is added to the conference call.

4.5 End a call

While during a call, touch the End key or Reject icon.

4.6 Disable Phone Calls (Airplane mode) Settings>Network & Connectivity>Flight Mode

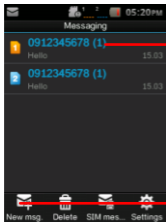
Some locations may require you to turn off your mobile, Wi-Fi, and Bluetooth wireless connections.

User Guide

Drag notification panel down, open '**Ongoing**', then touch the Airplane mode icon to activate flight mode.

5 Messaging

You can use Messaging to exchange text messages and multimedia messages with your friends.



Touch to open a messaging conversation

Touch to compose a new text or multimedia message.

A Message becomes an MMS if you send it to an email address, or add multimedia media file(s).

6 Call Logs

6.1 View Call Logs

Call Logs

The Call log lists the calls you have recently dialed, received, missed for SIM1 and SIM 2 card. Tap on any call log entry to make a call to that

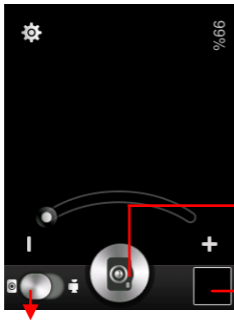
User Guide

contact. Press and hold a call log entry to call, send message, and so on.

7 Multimedia

7.1 Camera

Your camera's pictures and videos are stored in the SD card, so you must insert one to use the Camera. You can copy pictures and videos from the SD card to a PC and vice versa.



Touch to take picture/ video.

Image view

Touch to toggle between
video/camera modes

User Guide

7.2 Music

Tap music player to open your music player. You can easily transfer your favorite music from your PC to the SD card and experience a whole world of interesting and melodious music. Press the phone's volume up/down keys on the right side of the mobile phone to adjust the volume.

7.3 Video Player

Tap to open and play videos stored in your SD card. Press the phone's volume up/down keys on the right side of the mobile phone to adjust the volume.

7.4 FM Radio

You can listen to your favorite FM channels using the inbuilt FM receiver of your phone.

Press the phone's volume up/down keys on the right side of the mobile phone to adjust the volume.

8 Connect to the Internet

To configure your Internet:

- Go to **Browser>More>Settings>Data connection settings**.
- Select the data settings from the list of data account names given.

By default, your network provider sends the access point name settings via SMS, or it comes with your SIM card. You may need to

User Guide

install these settings. After this, you can choose from the listed data account names. If the data account names are not listed by default, please contact your network provider for the same.

9 Connect to Networks and Devices

Your phone can connect to a variety of networks and devices, including GPRS, Bluetooth, devices, such as headsets. You can also transfer files to/from your PC through the data cable.

9.1 Pair With Bluetooth Devices

Settings>Network & connectivity> Bluetooth

- Turn on Bluetooth and go to **Bluetooth settings**.
- Search for paired devices and touch the ID of the other device in the list in Settings. If the pairing is successful, your phone connects to the device.
- If the device you want to pair with is not in the list, make it visible.

10 Some Notable Features

10.1 Lock your SIM Card

Settings> Security Settings> Phone and SIM>PIN Lock

Lets you lock your SIM card via a security password which you can change anytime.

User Guide

The default security code to unlock the SIM is 0000.

Note: After you activate the PIN lock, you would be asked for a password whenever your phone or any other phone accesses the SIM card.

10.2 Manage Your Files

Menu > File Manager

You can view and manage your files available in the Phone or memory card from the file Manager. You can rename, view details share, move delete files and so on via the file Manager.

10.3 M! Zone+

Menu > M! Zone+

You can enjoy a host of entertaining services from here. Internet connectivity is not required for this feature.

10.4 M! Live

Menu>M! Live

You can access M! Live and download wallpaper, music ringtones and so on for your phone.

11 PC Suite

The Micromax PC Suite allows you to transfer your phone data such as contacts, messages, and other files to the PC, or to another mobile phone.

User Guide

Note: Windows 2000, Windows XP system, and Window 7 support this tool.

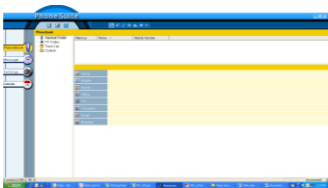
1.1 Requirements

To use the phone suite program you need to download and run the PcSuite.exe program.

This program can be downloaded from www.micromaxinfo.com. You can download it from the 'Downloads' section for a particular product.

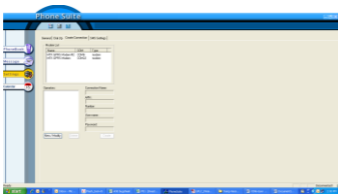
1.2 Run the PC Suite

1. Power on the cell phone.
2. Connect the USB cable with the phone and the PC/laptop.
3. Select the PC suite/COM port from the Left Key that appears.
4. Next, double-click the PhoneSuite application. The following screen appears.

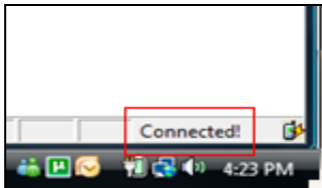


1. Click **Settings**. The following screen appears:

User Guide

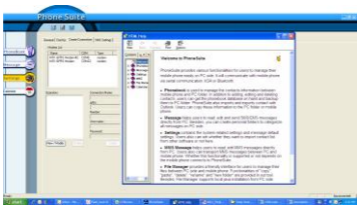


2. Set your preferences as per the mobile phone.
 - Mobile phone : Selected by default
 - COM port: Select the correct USB interface.
 - Language : English
 - Memory : Select the storage location you prefer, such as phone or SIM (if applicable).
3. After choosing your settings, it may take several seconds to connect. Once connected, it will show "Connected" on the right bottom.



User Guide

4. After connecting, you can read the function of each feature from the **Help** option.



12 Health and Safety Precautions

Please read these simple guidelines. Not following them may be dangerous or illegal.

Safe Driving

- Do not use the phone while driving. When you have to use the phone, please use the personal hands-free kit.
- Please do not put the phone onto any passenger seat or any place from which it may fall down in case of vehicular collision or emergency braking.

During Flight

Flight is influenced by interference caused by the phone. It is illegal to use a phone on the airplane. Please turn off your phone during a flight.

User Guide

In Hospitals

- Your Phone's radio waves may interfere with the functioning of inadequately shielded medical devices. Consult a physician or the manufacturer of the medical device to determine whether they are adequately shielded from external Radio Frequency. Switch off your device when regulations posted instruct you to do so.
- To avoid potential interference with implanted medical devices such as a pacemaker or cardioverter defibrillator:
 - Always keep your phone at least 15.3 centimeters (6 inches) from the medical device.
 - Do not carry the wireless device in a breast pocket.
 - Turn off the phone if there is any reason to suspect that interference is taking place.
 - Follow the manufacturer directions for the implanted medical device.
- If you have any questions about using your wireless device with an implanted medical device, consult your health care provider.

Unsafe Areas

Please turn off your phone when you are close to a gas station or in the vicinity of any place where fuel and chemical preparations, or any other dangerous goods are stored.

13 Taking Care of Your Device

Your device is a product of superior design and craftsmanship and should be handled with care: The following suggestions will help you protect your phone:

- Keep the device dry. Precipitation, humidity, and all types of liquids or moisture can contain minerals that will rust electronic circuits. If your device does get wet, remove

User Guide

the battery without turning on the device, wipe it with a dry cloth and take it to the service center.

- Do not store the device in high or cold temperature. High temperatures can shorten the life of electronic devices and damage batteries.
- Do not use or store the device in dusty, dirty areas. Its moving parts and electronic components can be damaged.
- Do not attempt to open the device other than as instructed in this guide. Repairing this phone by yourself other than our authorized service agents/centers goes against the warranty rules.
- Do not drop, knock, or shake the device. Rough handling can break internal circuit boards and fine mechanics.
- Do not use harsh chemicals, cleaning solvents, or strong detergents to clean the device. Only use a soft, clean, dry cloth to clean the surface of the device.
- Do not store your device near magnetic fields or allow your device to come in contact with magnetic fields for extended period of time.
- Location: The socket-outlet shall be installed near the equipment and shall be easily accessible.

Battery Recommendations:

- Please put the battery in a cool and well-ventilated place out of direct sunlight. We recommend you to charge the battery at room temperature range.
- Batteries have life cycles. If the time that the battery powers equipment becomes much shorter than usual, the battery life is at an end. Replace the battery with a new battery of the same make and specification.
- Do not discard the battery with household trash. Please dispose of used battery according to your local environmental laws and guidelines.
- Use manufacturer approved batteries, chargers, accessories and supplies. Micromax will not be held responsible for user's safety when using unapproved accessories or supplies.

User Guide

- Warnings on Battery:
 - (a) Please use appointed battery in case of explosion risk.
 - (b) Please dispose of lifeless battery under guidance.

Recycle Your Phone



The WEEE logo (shown at the left) appears on the product (battery, handset, and charger) to indicate that this product must not be disposed off or dumped with your other household wastes. You are liable to dispose of all your electronic or electrical waste equipment by relocating over to the specified collection point for recycling of such hazardous waste.

Collection and proper recovery of your electronic waste equipments at the time of disposal will allow us to help preserve the environment. Recycling of the electronic waste equipment will ensure safety of human health and environment. For more information on best practices for disposal of electronic and electrical waste, please visit to our web site: www.micromaxinfo.com/weee.php

Disclaimers

- The colors and specifications shown/mentioned in the user Guide may differ from the actual product. Images shown are for representation purpose only. Other product logos and company names mentioned herein may be trademarks or trade names of their respective owners.
- Micromax keeps the right to make modifications to the content in this user guide without any prior notice.
- The functions explained or listed in this manual may differ from the actual functions appearing in the mobile phone. In such a case, the latter shall govern.

User Guide

We do not guarantee the absolute accuracy of the User Guide Vis-a vis the actual handset.

Copyrights

All rights reserved. Reproduction, transfer, distribution or storage of part or all of the contents in this document in any form without the prior written permission of Micromax is strictly prohibited.